

Musculoskeletal case 27. Presentation

A 56-year-old man was admitted with a 3-month history of a painful lump on his left hand that had slowly increased in size. He also had a history of malaise and generalized abdominal pain. Clinical examination showed an expansile lesion on the dorsum of the left hand. An anteroposterior radiograph was obtained (Fig. 1). Computed tomography of the left hand (Fig. 2) and isotope bone scanning (Fig. 3) of both hands were requested for further evaluation. A whole-body isotope

bone scan showed that the lesion was solitary. On further questioning, the patient described neck swelling, and examination revealed a left-sided neck mass. Biochemical tests indicated hypercalcemia with a markedly elevated serum parathyroid hormone level. Radioisotope scanning of the neck (Fig. 4) was done.

What is the diagnosis?

For the answer to this question and a discussion of the diagnosis see [page 150](#).



FIG. 1.

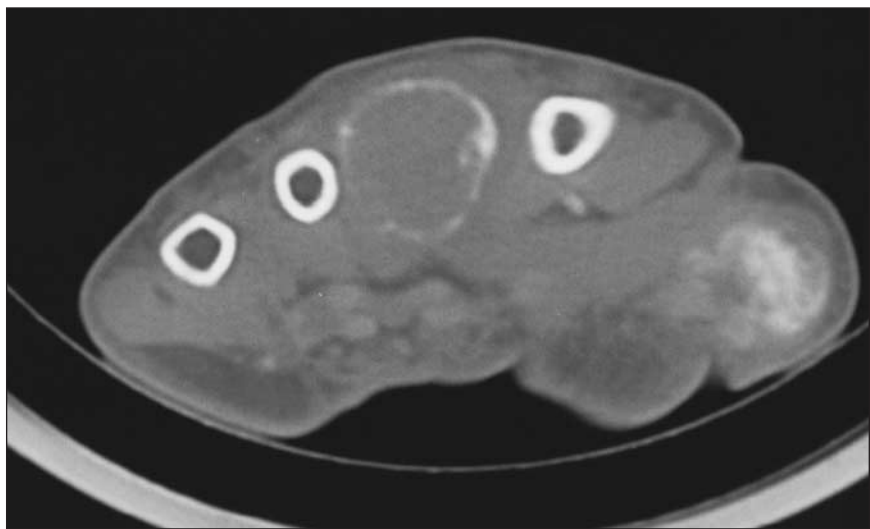


FIG. 2.

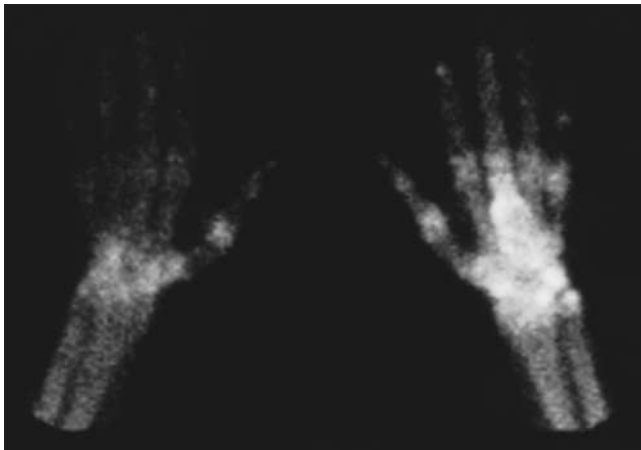


FIG. 3.

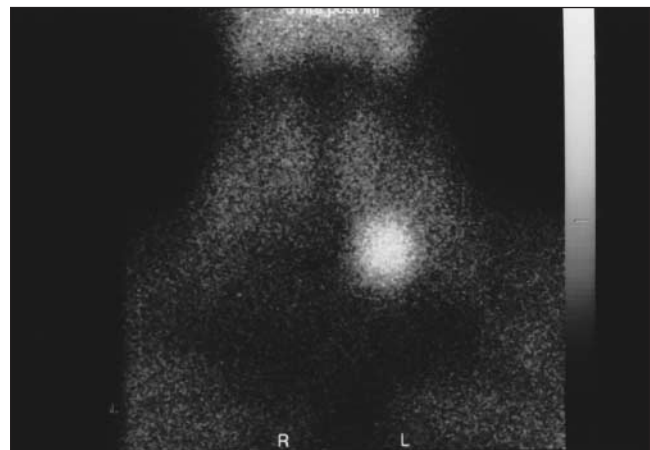


FIG. 4.

Submitted by R.F.J. Browne, MD,* S.M. Murphy, MD,* William C. Torreggiani, MB,† B. Hogan, MD,* and Peter L. Munk, MD,† from the *Department of Radiology, The Adelaide and Meath Hospital, Tallaght, Dublin 24, Ireland, and the †Department of Radiology, Vancouver General Hospital, Vancouver, BC

Inquiries about this section should be directed to the section editor: Dr. Peter L. Munk, Professor, Department of Radiology, Vancouver General Hospital and Health Sciences Centre, 855 West 12th Ave., Vancouver BC V5Z 1M9; plmunk@interchange.ubc.ca