

Soft-tissue case 37. Presentation

A 64-year-old woman presented with a palpable abdominal mass, 8 months after laparoscopic cholecystectomy (Fig. 1). From the figure, can you make the diagnosis?

For the answer and discussion see [page 32](#).

Section Editor: Lawrence A. Stein, MD

Submitted by Lawrence A. Stein, MD, Department of Diagnostic Radiology, and Jane Mathew, MD, Department of Surgery,

Royal Victoria Hospital, Montreal, Que.

Submissions to *Radiology for the Surgeon*, soft-tissue section, should be sent to Dr. Lawrence A. Stein, Department of Radiology, Royal Victoria Hospital, 687 Pine Ave. W, Montreal QC H3A 1A1.

© 2001 Canadian Medical Association

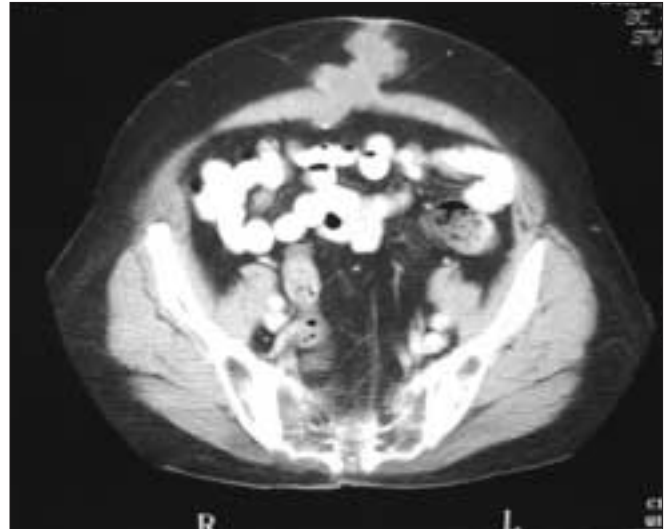


FIG. 1.

Essential reading

from CMA Publishing Services

- CMAJ
- Canadian Journal of Surgery
- Clinical and Investigative Medicine
- Journal of Psychiatry & Neuroscience

For information contact

CMA Member Service Centre
888 855-2555
cmamsc@cma.ca

